



KISUMU LOCAL INTERACTION PLATFORM (KLIP)



MARKET PLACES PROTOTYPES

© 2012
Maseno University/MUF-KLIP

George M. Onyango – Principal Investigator
George G. Wagah – Deputy Principal Investigator

Market Places Project
Kisumu Local Interaction Platform
February 2013

TRANSLATING CONCEPTS INTO DESIGN

Designed by:

Kisumu Market Traders Association
Street Traders Association
Municipal Council Market Attendants
Maseno University/Market Places Team

Drawn:

Bethwel Ondiek
Geoffrey Wasonga

The process of design and development has been a collaborative effort between the various stakeholders listed above. The team had a series of consultative meetings building on the main workshop held in January 2013. The traders have adopted the designs and are using them in various sites. Demonstration units have been constructed with support from the Market Places Project and incorporated in the sites that have been identified for implementation within the city.

DEVELOPMENT PROCESS

The Concepts presented in this document developed through consultation with market traders, associations supporting the traders, planning and development professionals in the project have attempted to capture the aspirations of the end users. Efforts have focussed on having design that would be easily upscaled, are affordable and blend well with the city development.

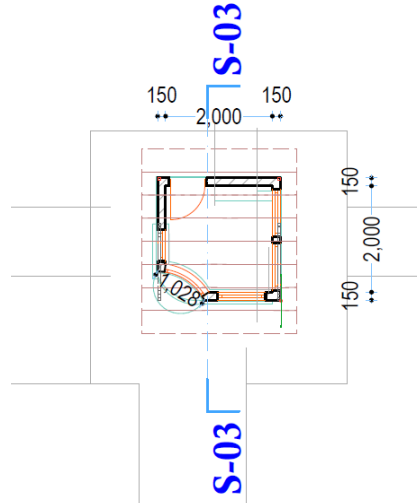
The acceptance by the City Planner and Engineer was considered critical to the success of the prototype. The designs were shared and approved before fabrication. Input from experienced designers translated the concepts proposed by the users to produce a design that is both functional and acceptable.

Fabrication was undertaken with artisans in the informal sector (jua Kali workshops). The use of the local artisans allowed for improving technology dissemination and a number of traders have adopted the designs to make their own kiosk. The adoption of the designs has seen a fall in the actual production cost as the fabricators get the hang of producing the prototypes and minimizing the overall costs.

MARKET KIOSK

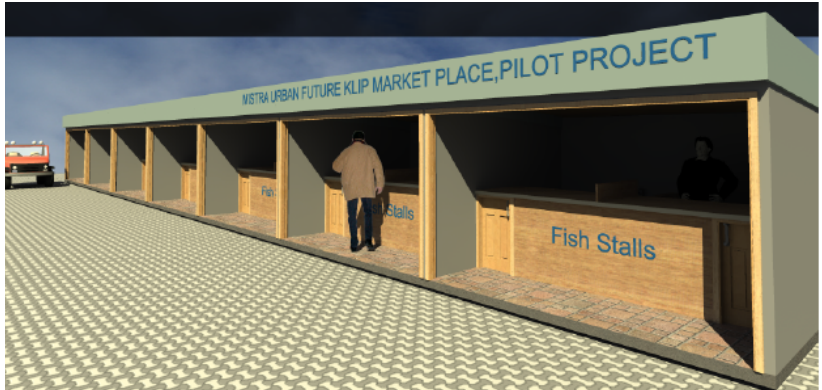
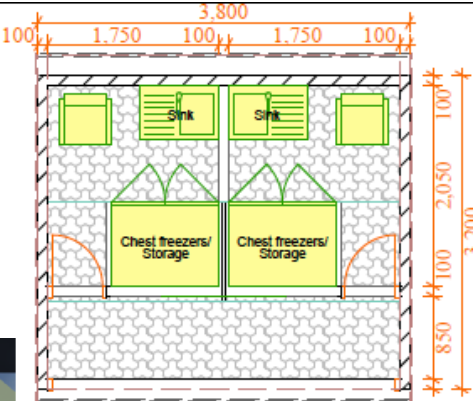
This small kiosk unit can be used for a multiplicity of functions. These include use a newspaper stand, book store, selling of sweets and snacks, a tobacco shop and similar small scale sale.

On the other hand it could be integrated into an eatery and be used as the cashier stand and server for various items such as water, sodas and even snacks



FISH KIOSK

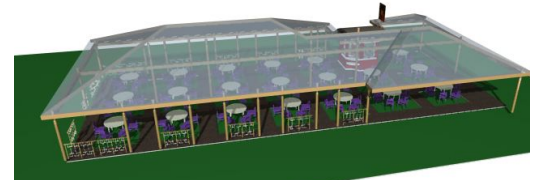
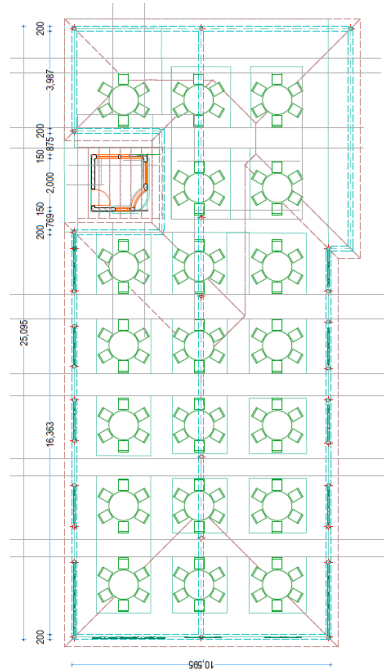
This concept was developed by women fish traders at the Municipal Fish Market. It build on the concept of a kiosk but integrates facilities that allow for both fresh and smoked fish sale. The design allows for location in various sites and flexibility of construction.



FOOD KIOSK

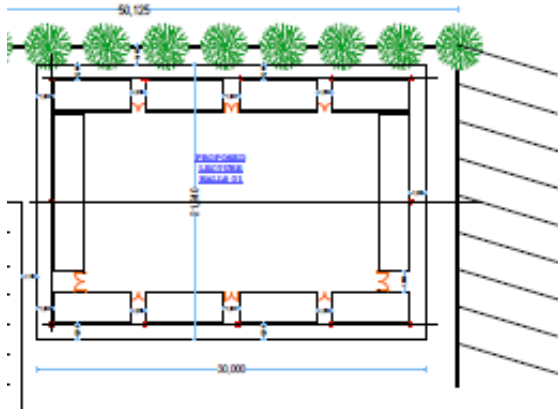
The kiosks at the lake shore near the Kenya Railways Goods Shed inspired this design. It provides for an expansive open area for serving the various customers who come here to eat .

The Kitchen and Storage is located at the rear end and the eating area is designed to be closer to the Lake with unrestricted view of the Lake



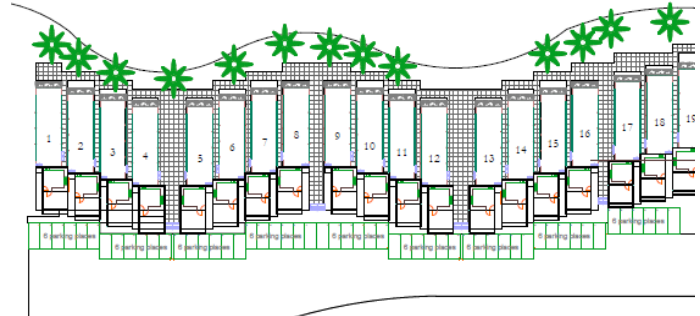
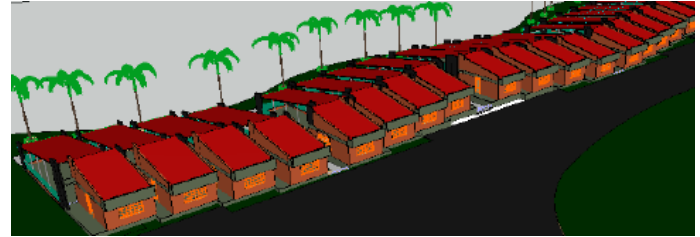
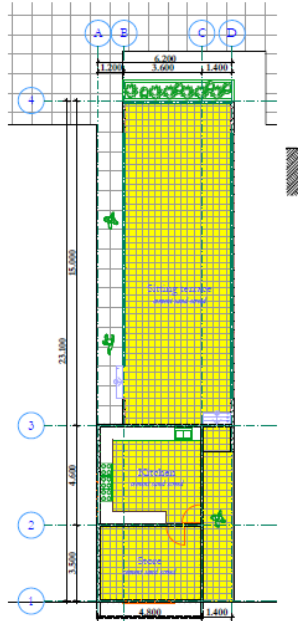
CONTAINER MARKET

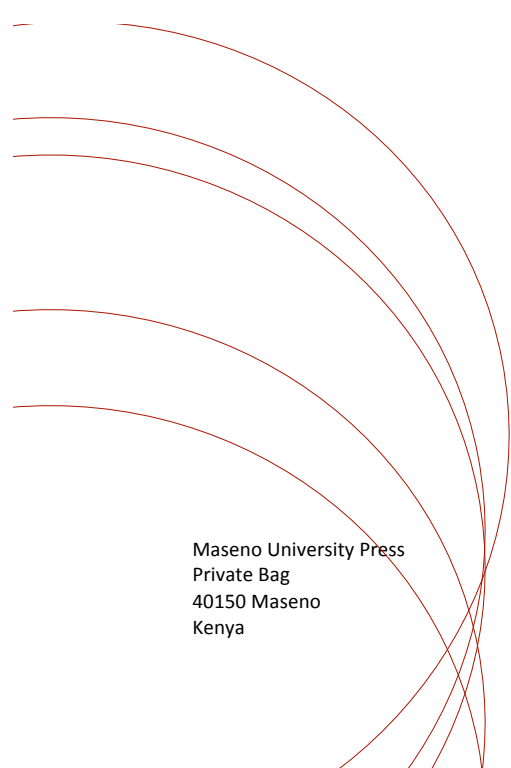
This concept is based on a need to have an open plan market while providing facilities for storage for the traders. Used containers are placed to create a court which can be secured in the evening. A roof provides protection from the elements and creates a sense of unity over the set of containers. The design is modular and can thus be adopted to various locations depending on the size of land available.



LAKE FRONT MARKET

This design was a result of years of deliberations with stakeholders at the “Lwangni” Hotels at the Lake shore. It allows for row development of kiosks as a complex that factors in the needs of the proprietors and customers. It is targeted at maintaining the business activities while improving the overall aesthetics at the Lake front.





Maseno University Press
Private Bag
40150 Maseno
Kenya



KISUMU LOCAL INTERACTION PLATFORM (KLI)